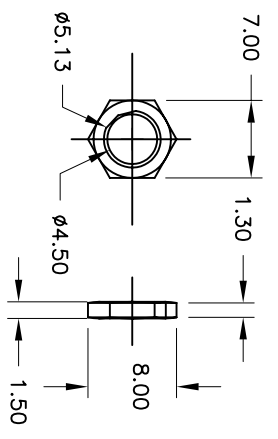
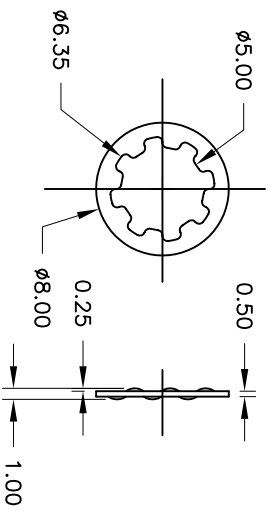
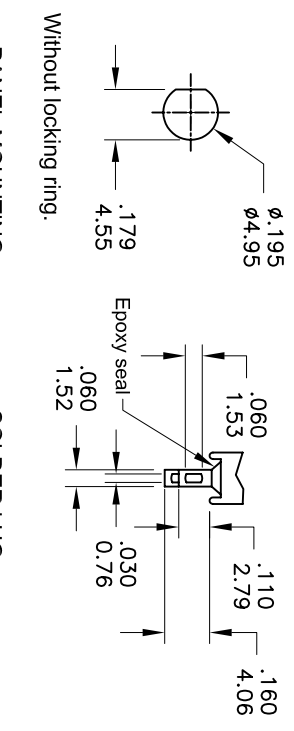


Model No.	POS. 1	POS. 2	POS. 3
	2MS1	ON	NONE
Term. Comm.	2-3		2-1
SCHEMATIC			

**SWITCH FUNCTION**



**PANEL MOUNTING**

**SOLDER LUG**

**SPECIFICATIONS**

**MECHANICAL LIFE:** 30,000 make-and-break cycles.  
**CONTACT RESISTANCE:** 20m Ω max. initial @ 2-4VDC  
 100mA for both silver and gold plated contacts.  
**INSULATION RESISTANCE:** 1,000M Ω min.  
**DIELECTRIC STRENGTH:** 1,000 V RMS@sea level.  
**OPERATING TEMPERATURE:** -30° C to 85° C.

**MATERIALS**

**CASE -** Dialyl phthalate(DAPY) UL94V-0 )  
**ACTUATOR -** Brass,chrome plated  
**BUSHING -** Brass,nickel plated  
**HOUSING -** - Stainless Steel  
**SWITCH SUPPORT -** Brass,tin plated.  
**TERMINALS/CONTACT -** Brass, with Silver or gold plated.

**RATING :**

R : 0.4 Volt-Amps(VA) max. @20V max.(AC or DC)  
 Q : 1Amp @250VAC  
 3Amps @120 VAC or 28 VDC

**东莞市创恩电子有限公司**

符号	原尺寸	修改後尺寸	變更日期
1	(A)		
2	(B)		
3	(C)		
4	(D)		
5	(E)		

SCALE (比例) : 3 : 2		TITLE	Sub - Miniature Toggle Switches	SIZE
TOLERANCE (公差) :		DWG NO.	2MS1T1B1M1QES-1	圖紙
0.00 mm ± 0.25mm		REV.	A	UNIT
0.0 mm ± 0.40mm		版本	DATE	單位
ANGULAR : ± 5°		CHECKED BY	RICHARD	inch
FILE NAME : 2MSP0336		審核	DRAWN BY	mm
			製圖	1 of 1
			OD A	