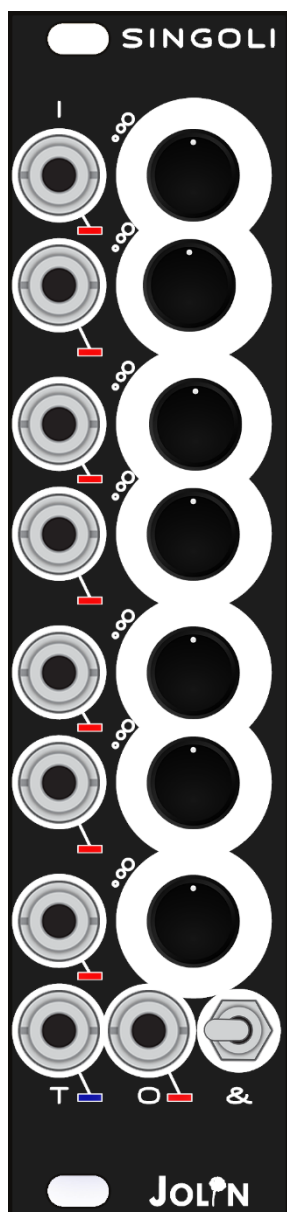


SINGOLI

combining transient detector



SINGOLI is a 7 channels DC coupled active combiner with an analogue transient detector output.



why

- To mix up to 7 audio sources and control voltages.
- To output a short gate that follows the peak amplitude of all the inputs combined.
- To trigger drums or open VCAs following the amplitude of any given signal.
- To expand *Tutto&Sempre* with 7 more mono channels.

with

- Oscillators – mix their output and get complex waveforms.
- Drums – trigger them following the transients of other sound sources.
- CV – combine them for evolving unpredictable sequences.
- VCAs – use the T out to open the amplifier following the dynamic range of the input: compressor.

how

All the inputs I are equipped with LED meters and a dedicated attenuating potentiometer.

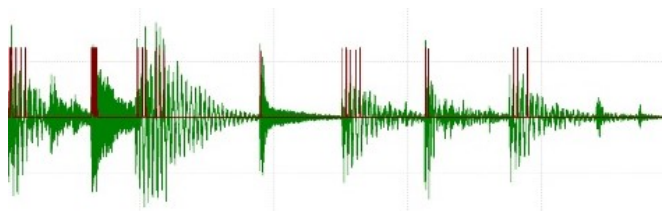
O will give you the combined mixed output¹.

T is an additional transient detector out.

It will fire only when a certain threshold is detected from the sum of all the inputs.

Take as an example the graph below.

In green the input signal, in red the output from T.



features

- DC coupled mixer with 7 inputs and individual attenuators.
- Intensity sensitive LED meters on all the inputs.
- Analogue transient detector output.
- Toggle switch to activate / deactivate its normalization to *Tutto&Sempre*.
- “Whatever” power connector a.k.a. don’t mind the polarity.

specs

- dimensions ⇒ width 6HP, depth 25mm.
- current draw ⇒ +12V 15ma, -12V 10ma

Demos and build documentation at jolin.tech/singoli

¹ The toggle switch activates or deactivates the internal connection to *Tutto&Sempre* when the two modules are paired together thanks to the included JST cable.