

MST Midi to CV Expander Visual BOM

Page 1

Resistors

150Ω - R1



499Ω 1% - R4



1kΩ - R7



4.7kΩ - R2, R8, R9



10kΩ - R3



100kΩ - R5, R6



1kΩ Resistor Array - R12



100kΩ Resistor Array - R10, R11



Total=12

Diodes

1N4148 - D1, D2, D3, D4



5mm RGB LED - D1 *



Total=5

Capacitors

15pF Ceramic - C11, C12



51pF Ceramic - C15, C16, C17, C18, C19



47nF Ceramic - C4, C7, C8, C9



.1μF Ceramic - C1, C2, C3, C5, C6, C10, C13



10μF Electrolytic - C14



Total=19

Voltage Regulators

TL431 - U1



LM78L05 - VR1



Total=2

Integrated Circuits

TL072 - U2



CD74HC4016E - U3

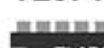


PIC18F2553 - U4

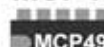


PIC18F2553

TL074 - U5



MCP4922 - U6



Total=5

Potentiometers

1k Linear Trim Pot - R1*



Total=1

Jacks/Switches

4 Pos. side mount DIP switch - S1



3.5mm PJ-301M-12 Vertical Mount Jack - J1*, J2*, J3*, J4*, J5*



SPST Pushbutton - S1*



SPDT Sub mini center off - S2*



Total=8

* Denotes that part goes on front panel pcb

MST Midi to CV Expander Visual BOM

Page 2

Connectors

8 Pin (2x4) Right Angle Header - P1, P1*



6 Pin (2x3) Right Angle Header - P2, P2*



Right Angle I2C Headers - P3, P4



10 Pin Unshrouded Right Angle Header - P5



I2C Cable



Total=6

Other

20mHz Crystal - X1



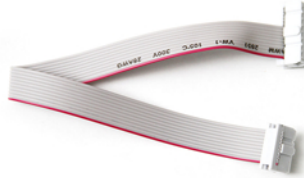
2.5mm Screws



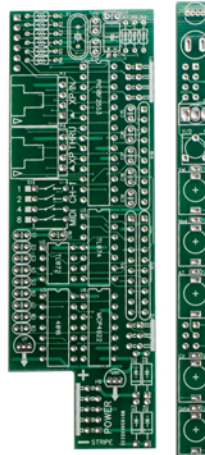
3mm Screws



10 to 16 Pin Keyed Power Cable



PCB & Panel



* Denotes that part goes on front panel pcb